

**ELF3 Antibody (C-term)**  
**Affinity Purified Rabbit Polyclonal Antibody (Pab)**  
**Catalog # AP9441b****Specification**

---

**ELF3 Antibody (C-term) - Product Information**

Application	WB,E
Primary Accession	<a href="#">P78545</a>
Other Accession	<a href="#">Q4V7E1</a> , <a href="#">Q3UPW2</a> , <a href="#">Q70273</a> , <a href="#">Q9NZC4</a> , <a href="#">Q32LN0</a>
Reactivity	Human
Predicted	Bovine, Mouse, Rat
Host	Rabbit
Clonality	Polyclonal
Isotype	Rabbit IgG
Calculated MW	41454
Antigen Region	322-349

**ELF3 Antibody (C-term) - Additional Information****Gene ID** 1999**Other Names**

ETS-related transcription factor Elf-3, E74-like factor 3, Epithelial-restricted with serine box, Epithelium-restricted Ets protein ESX, Epithelium-specific Ets transcription factor 1, ESE-1, ELF3 ([http://www.genenames.org/cgi-bin/gene\\_symbol\\_report?hgnc\\_id=3318](http://www.genenames.org/cgi-bin/gene_symbol_report?hgnc_id=3318))

**Target/Specificity**

This ELF3 antibody is generated from rabbits immunized with a KLH conjugated synthetic peptide between 322-349 amino acids from the C-terminal region of human ELF3.

**Dilution**

WB~~1:1000

E~~Use at an assay dependent concentration.

**Format**

Purified polyclonal antibody supplied in PBS with 0.09% (W/V) sodium azide. This antibody is purified through a protein A column, followed by peptide affinity purification.

**Storage**

Maintain refrigerated at 2-8°C for up to 2 weeks. For long term storage store at -20°C in small aliquots to prevent freeze-thaw cycles.

**Precautions**

ELF3 Antibody (C-term) is for research use only and not for use in diagnostic or therapeutic procedures.

**ELF3 Antibody (C-term) - Protein Information**

**Name** ELF3 ([HGNC:3318](#))

**Function** Transcriptional activator that binds and transactivates ETS sequences containing the consensus nucleotide core sequence GGA[AT]. Acts synergistically with POU2F3 to transactivate the SPRR2A promoter and with RUNX1 to transactivate the ANGPT1 promoter. Also transactivates collagenase, CCL20, CLND7, FLG, KRT8, NOS2, PTGS2, SPRR2B, TGFBR2 and TGM3 promoters. Represses KRT4 promoter activity. Involved in mediating vascular inflammation. May play an important role in epithelial cell differentiation and tumorigenesis. May be a critical downstream effector of the ERBB2 signaling pathway. May be associated with mammary gland development and involution. Plays an important role in the regulation of transcription with TATA-less promoters in preimplantation embryos, which is essential in preimplantation development (By similarity).

**Cellular Location**

Cytoplasm. Nucleus {ECO:0000255|PROSITE-ProRule:PRU00237, ECO:0000269|PubMed:10391676, ECO:0000269|PubMed:15169914, ECO:0000269|PubMed:17060315} Note=Localizes to the cytoplasm where it has been shown to transform MCF-12A mammary epithelial cells via a novel cytoplasmic mechanism Also transiently expressed and localized to the nucleus where it induces apoptosis in non-transformed breast epithelial cells MCF-10A and MCF-12A via a transcription-dependent mechanism

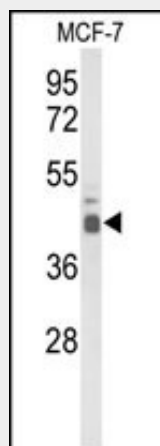
**Tissue Location**

Expressed exclusively in tissues containing a high content of terminally differentiated epithelial cells including mammary gland, colon, trachea, kidney, prostate, uterus, stomach and skin

**ELF3 Antibody (C-term) - Protocols**

Provided below are standard protocols that you may find useful for product applications.

- [Western Blot](#)
- [Blocking Peptides](#)
- [Dot Blot](#)
- [Immunohistochemistry](#)
- [Immunofluorescence](#)
- [Immunoprecipitation](#)
- [Flow Cytometry](#)
- [Cell Culture](#)

**ELF3 Antibody (C-term) - Images**

Western blot analysis of ELF3 Antibody (C-term) (Cat. #AP9441b) in MCF-7 cell line lysates

(35ug/lane). ELF3 (arrow) was detected using the purified Pab.

**ELF3 Antibody (C-term) - References**

- Lee, S.H., et al. Mol. Cancer Ther. 7(12):3739-3750(2008)  
Wu, J., et al. Cell Res. 18(6):649-663(2008)  
Peng, H., et al. J. Cell. Physiol. 215(2):562-573(2008)  
Iwai, S., et al. Oral Dis 14(2):144-149(2008)  
Manavathi, B., et al. J. Biol. Chem. 282(27):19820-19830(2007)  
Choi, S.G., et al. J. Biol. Chem. 273(1):110-117(1998)